



Search

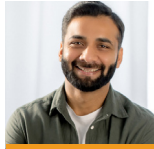


Claire Foster

Legal Director

Dallas

+202 484 8689



Alex Walton

Digital Director

London

+347 662 1545



Mario Fernandez

Skills Trainer

Dallas

+225 878 8754



Jeanne Dubois

Product Owner

Dallas

+705 649 3496

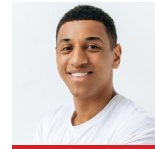


Diane Moore

Skills Specialist

Dallas

+930 847 4000



Tom Williams

Digital Director

Hamburg

+347 622 1545

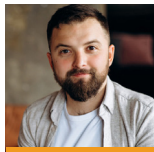


Beverly Fields

Visual Designer

London

+844 082 4677



Harry Maxwell

Finance Director

London

+542 934 8657



Shannon Caldwell

Head of Training

Dallas

+305 900 7825



TeamDirectory

Buyers Guide

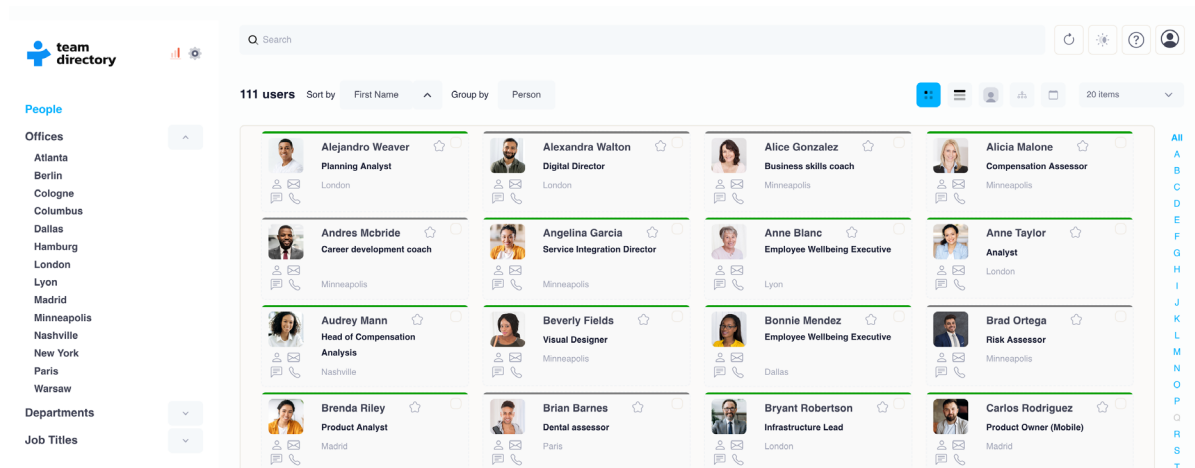
Introduction

TeamDirectory has been developed as a fully featured application intended to meet the needs of modern orgs out of the box.

In small organizations, it's common for everyone to know each other's roles and responsibilities. Information flows informally, and it's easy for team members understand who does what.

However, as organizations grow, especially beyond the 50-person mark, this informal network starts to break down. Clear structure, defined roles, and streamlined communication become essential to maintaining efficiency and cohesion.

In today's business environment, this challenge is even more pronounced. With distributed teams, remote work, and asynchronous collaboration. Without the right tools in place, organizations risk losing alignment and clarity.



A modern staff directory provides a solution, far more than just a list of names and emails, a well-designed directory acts as a dynamic map of the organization. A centralised source of information. Enabling employees to quickly locate and connect with colleagues across departments, roles, and locations, whether they're reaching out for collaboration or support.

An effective directory supports productivity, engagement and a collaborative working culture. For new hires, it supports onboarding by helping them quickly understand team dynamics. For cross-functional teams, it makes finding collaborators and decision-makers simple. For remote and hybrid teams, it helps provide the visibility and connectivity often lost outside of a shared office space.

Going beyond this basic functionality, TeamDirectory offers advanced search and custom filtering based on roles, departments, location, or any attribute defined in Microsoft Entra ID (formerly Azure Active Directory). With real-time syncing and little manual upkeep required, organizations benefit from up-to-date, trustworthy information without the overhead.

TeamDirectory is a simple, powerful solution with far-reaching business impact. It brings clarity to complex organizations, strengthens internal networks, and ultimately helps people find each other faster so they can do their best work, together.



Why Choose TeamDirectory?



Seamless Integration

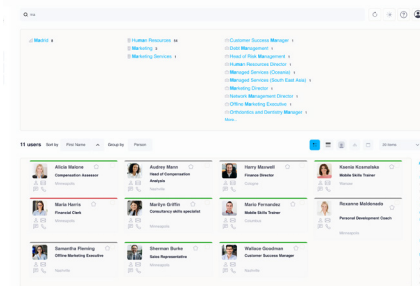
TeamDirectory integrates directly into your existing Microsoft workflow with single sign-on and no training needed. It works where your teams already are, making adoption simple and support minimal.

Employees can search, connect, and collaborate without switching tools or logging into another platform.

Connect Teams

TeamDirectory makes it easy to locate colleagues using smart filters such as name, job title, department, or location. It eliminates wasted time searching through outdated lists or guessing who to contact.

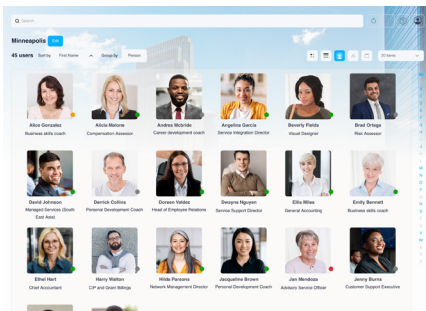
With real-time syncing from Microsoft Entra ID, you always have access to current, accurate information boosting efficiency across your organization.



Simplify Onboarding

TeamDirectory gives new hires immediate insight into team structures, roles, and contact info. This helps them learn the organisation faster and feel more confident and connected from day one, making onboarding smoother and more effective.

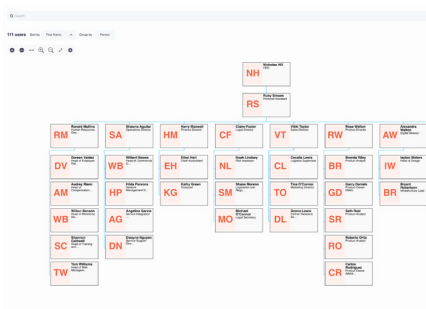
Combining TeamDirectory's org chart view with smart categories, new hires can see the structure of only the teams and people that matter to them, stopping them being over whelmed in larger organisations and helping to quickly identify the right points of contact.



Informed Decisions

With accurate, real-time data combined with intuitive search, decision-makers can quickly identify the right people to consult, collaborate with, or assign, ensuring smarter, faster, and more strategic outcomes.

Gain insights into your organisations structure with Org Chart view, providing a visualisation of your organizations hierarchy to support future staffing changes.



A Technical Overview

Discover how TeamDirectory simplifies setup, enhances search, and keeps employee data accurate with minimal effort.

Effortless Configuration

Get up and running in minutes. TeamDirectory integrates seamlessly with Microsoft Entra ID, enabling you to automatically generate your organizational directory.

With built-in single sign-on just a few clicks and your directory is live. No coding is required and maintenance can easily be undertaken by non-IT staff.

Custom Categories

Create smart categories to organize your directory in meaningful, actionable ways, apply logic-based filters that reflect your organizations unique structure.

Define custom categories based on any Microsoft Entra ID attribute, such as team, location, or job title, making it easier than ever to find the right people for the job.

Chart View

Quickly view your organization's structure and identify key contact information at a glance.

TeamDirectory's Org Chart view presents you with a visual hierarchy of your organization, making it easier to gain insights about team structures, identify reporting lines and find the right people for collaboration.

Advanced Search

Move on from messy, inflexible search boxes and quickly locate people or teams. Customize and streamline how you search and focus on the information you and your team actually need.

Advanced search functionality allows you to navigate your entire organization, search by department, job title, location, or other key attributes to connect with colleagues quickly.

Employee Profiles

More than just a name and email. View detailed profiles with information like department, office location, reporting lines, and more.

Start conversations instantly and initiate a Microsoft Teams chat or call right from within your directory.

Minimal Maintenance

Keep data up-to-date and complete with zero hassle. Automatically identify missing or outdated information from within TeamDirectory.

Empower employees to submit profile updates directly, streamlining data quality without creating admin bottlenecks.



Trust & Security

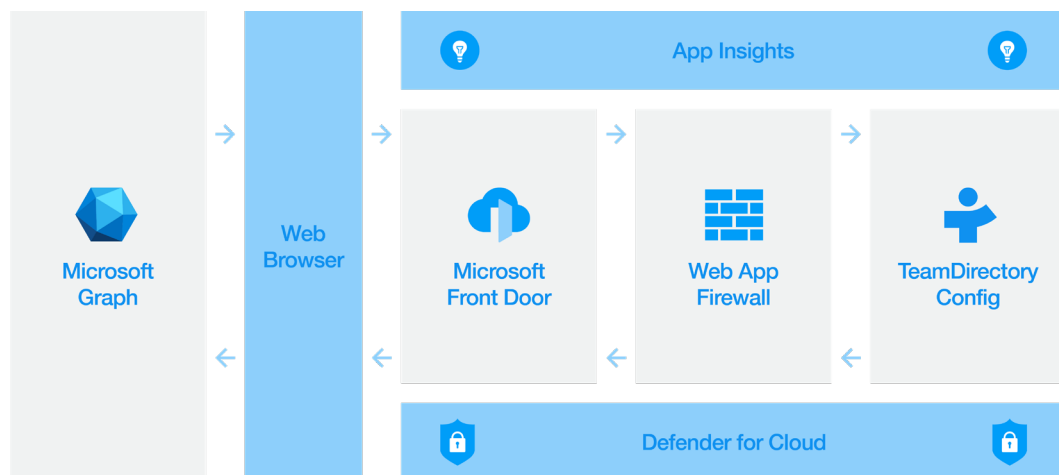
Data Security

TeamDirectory **only stores essential configuration data**, such as filter rules and images linked to categories for example, displaying pictures of your office locations.

TeamDirectory **does not store or replicate employee data**. The application operates entirely within your browser or the Microsoft Teams desktop application.

Architecture

TeamDirectory runs securely within your browser, communicating directly with Microsoft Graph to fetch your organizational data. Unlike traditional applications, your data never leaves your browser environment only configuration settings pass through secure Azure services, protected by Microsoft Front Door, Web Application Firewall, and Defender for Cloud.



Microsoft Graph

A gateway to data and intelligence in Microsoft cloud services like Microsoft Entra and Microsoft 365.

Microsoft Front Door

A global, scalable entry-point that uses the Microsoft global edge network to create fast, secure, and widely scalable overview web applications.

Web App Firewall

Protection for the top 10 Open Web Application Security Project (OWASP) security vulnerabilities.

Defender for Cloud

A cloud-native application protection platform (CNAPP) that includes security measures and practices designed to protect cloud-based applications from various cyber threats and vulnerabilities.



Benefits for the Whole Team

Human Resources

Faster Onboarding: New hires get instant visibility into the organization's structure.

Boosts Engagement: Helps employees feel more connected, especially in hybrid or remote setups.

Data Accuracy: Automatically syncs from Microsoft Entra ID, reducing manual updates and the risk of outdated information. Identify incomplete or incorrect data then apply fixes or enable employees to submit data change requests themselves, all without leaving TeamDirectory.

Executive Leadership

Strategic Visibility: Leaders can understand team structures and locate key individuals quickly.

Drives Efficiency: Reduces friction in internal collaboration, decision-making, and communication.

Scales: Whether you're doubling in size or acquiring a few new team members, the directory evolves with you.

Future Planning: Gain insights into your organization and confidence in your data to make more informed decisions.

Team Managers

Easily Connect: Search by role, location, or any Entra ID custom attribute.

Resource Alignment: Know who's on which team, who reports to whom and where expertise sits.

Integrated Communication: Start a chat or call directly from the directory, no switching apps.

Reinforces Culture: Staff feel more connected when they can easily find and reach colleagues.

IT & System Admins

Seamless Deployment: Integrates directly with Microsoft Entra ID for easy rollout and secure authentication.

Low Maintenance: Updates automatically, no need for manual user management.

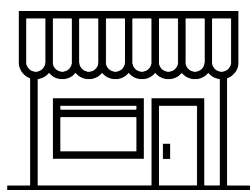
Customisable Access Control: Define filters, scopes, and visibility base on existing Microsoft permissions.

Secure & Compliant: Uses Microsoft Azure technology stack to provide security and stability services, GDPR compliant.



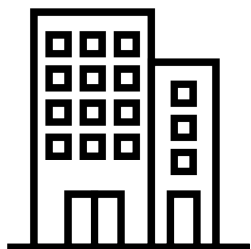
Pricing

Simple pricing, based on your organization's size.



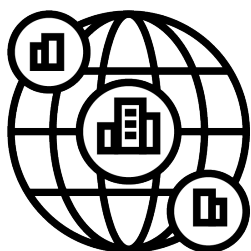
Up to 200 Employees

\$25 monthly or **\$200** annually



Up to 750 Employees

\$60 monthly or **\$500** annually



Over 750 Employees

\$140 monthly or **\$1200** annually



Take your next steps.
Start your 30 Day free trial today.

Learn more about TeamDirectory at
teamimprover.com